

Changzhou Beam Diagnostics  
Automation Co. Ltd.

TEL: 0519-83982882

FAX: 0519-83982882

MAIL: [info@beamdiag.com](mailto:info@beamdiag.com)

ADD: A2006 HUB Biomedical  
Enterprise incubator, No.26,  
Huashan Road, Xinbei Zone,  
ChangZhou, PRC



WeChat  
“必达科生物”





---

BeamCyte

---

Flow Cytometer

## BeamDiag Intro

Changzhou Beam Diagnostics Automation Co. Ltd. was founded in December 2013.

The corporation is engaged in independent research and development of the streaming technology products production and sales of products related to pretreatment preparation instrument and other biotechnology products by flow cytometry.



## BeamDiag Team

The company has an entrepreneurial team of high level, high quality, strong professional talents , and the team leader was graduated from the Nanjing University of Aeronautics & Astronautics. The core team accumulates rich experience from prior jobs, and forms a scientific management system. Team members are young and full of vitality, with innovative awareness and the courage to meet the challenges. The company is well equipped with social responsibility and willing to contribute to the localization, automation,miniaturization and modularization of Chinese advanced medical instruments.

## Product Overview

Flow cytometer is listed as a class II medical device In CFDA, and the classification code is 6840;

As a routine instrument, the flow technology platform can be widely used in many fields. Flow cytometry and analytical techniques have been widely used in the fields of immunology, hematology, oncology, cell biology, biochemistry and other scientific research and clinical medicine.

BeanDiag products contain the following three models:

BeamCyte-1026 ( 2 lasers. 6 colors and 8 channels)

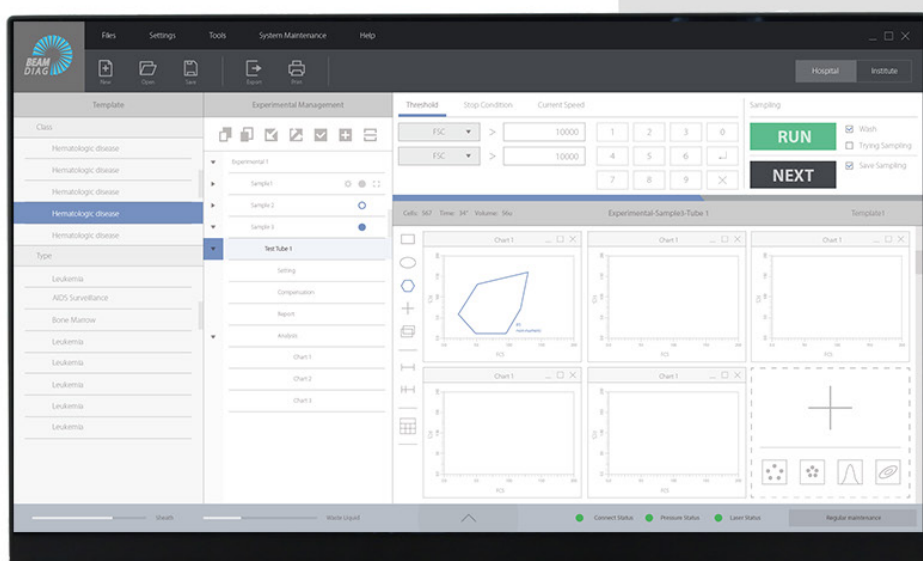
BeamCyte-1024 ( 2 lasers. 4 colors and 6 channels)

BeamCyte-1014 ( 1 laser. 4 colors and 6 channels)

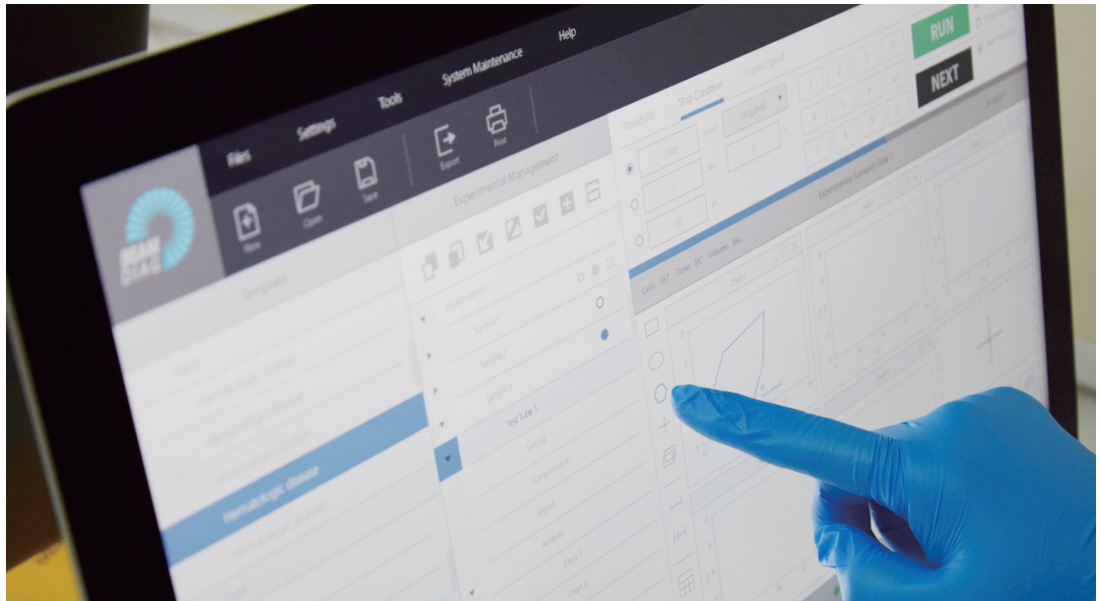


## Application Scenarios

There are two applications of flow cytometry: hospital and research institute. For two different scenarios and different needs, BeamDiag will provide different solutions: standardized solutions, automation solutions and customized solutions.







## System Features

Flow cytometry system provides different solutions to meet the needs of different users and stay professional. Both hardware and software use visualized expression to ensure users' clear recognition and eventually improve work efficiency.



Efficiency



Professional



Visualization

## Technical Specifications

### Fluorescence Threshold Sensitivities :

< 50 MESF for FITC

< 50 MESF for PE

< 50 MESF for APC

### FSC Resolution :

0.5um

### SSC Resolution :

0.3um

### Counting Function :

Yes

### Fluorescence Precision :

≤ 2%CV (for flow check)

≤ 3%CV for APC

### Measurement Dynamic Range :

> 6logs

### Data Acquisition Rate :

50,000 events/second, Maximum

### Custom Core Diameter :

0.5-50μm

### Minimum Sample Volume :

<20μL

### Custom Sample Flow Rates :

2 ~ 100μL/Min

15 steps can be adjusted

### Start Time :

<4min

### Software :

Compatible with FCS2.0 and 3.0/3.1 industry standard data format

Support export.CSV and.TXT formats

### Product Model :

BeamCyte-1026

( 2 lasers, 6 colors and 8 channels)

BeamCyte-1024

( 2 lasers, 4 colors and 6 channels)

BeamCyte-1014

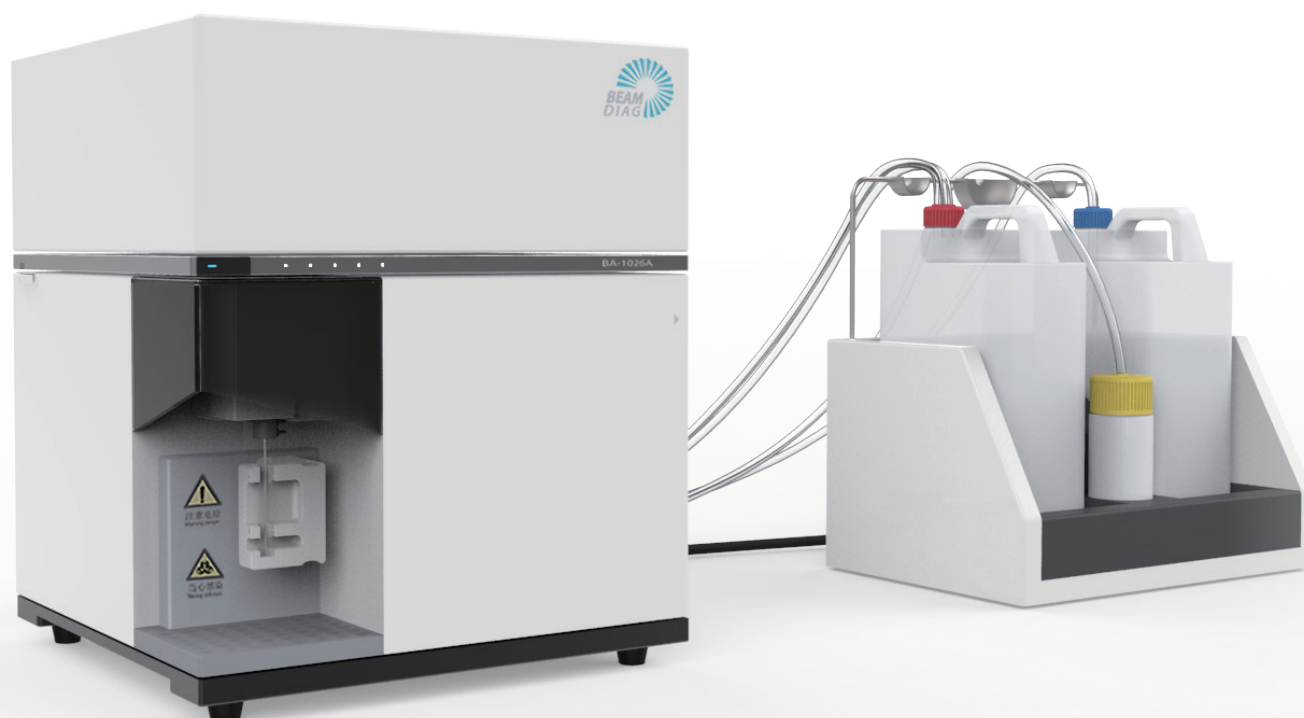
( 1 laser, 4 colors and 6 channels)

### Host Volume :

420x420x521

### Reagent Table Size :

440x300x447mm



## BeamDiag Partners



WuHan Tacro  
Technology

3rd party service provider  
of certification service and  
clinical testing



TaiYuan WeiKang HongYe  
Technology

Large dealers in the field of  
medical instruments



Beijing QuantoBio  
Technology

The only domestic manufacturer  
of flow cytometry reagents  
development and production

↓ Testing result (BeamDiag laboratory data)

